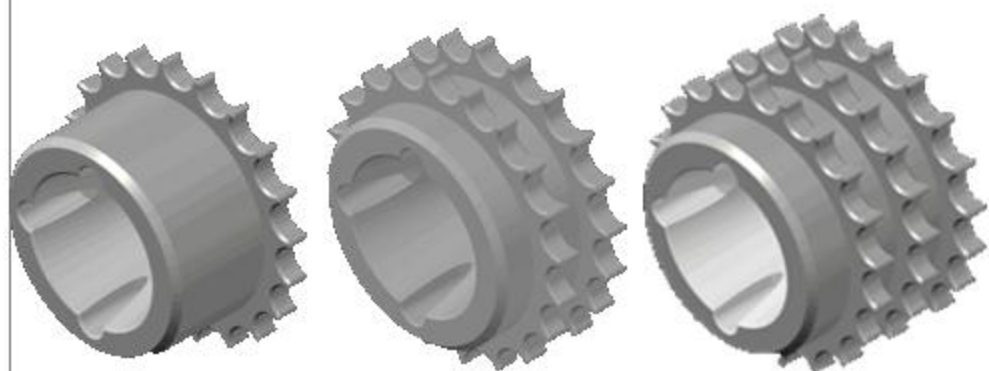


# Pignoni per bussola conica per catene a rulli ISO

DIN 8188 – ISO 606



**Catalogo tecnico 2009**

**-Trasmissioni industriali s.a.s. -**

Via lago di Annone n°15 36015 Schio VI - Italy – Tel: 0445-500142 fax: 0445-500018

Mail: [info@trasmissioniindustriali.com](mailto:info@trasmissioniindustriali.com) Site web: [www.trasmissioniindustriali.com](http://www.trasmissioniindustriali.com)



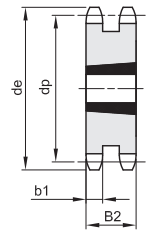
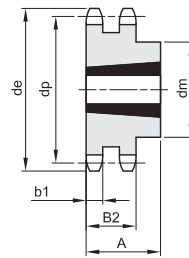
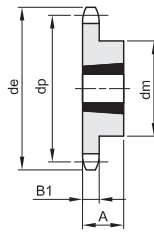
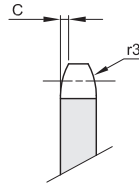
# PIGNONI PER BUSSOLA CONICA - DIN 8187 - ISO 606

## SPROCKETS FOR TAPER BUSHES - DIN 8187 - ISO 606

**3/8" x 7/32"**

**9,525 x 5,72 mm**  
**Rullo 6,35 mm**  
**06B - 1 - 2 - 3**

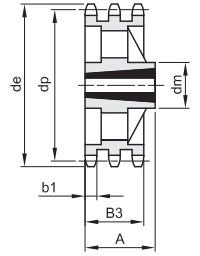
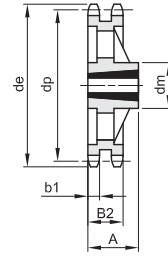
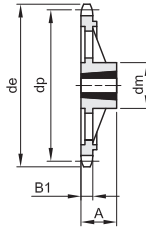
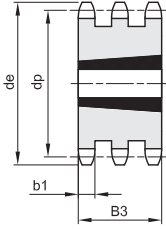
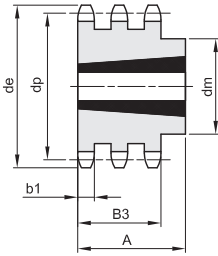
B1	B2	B3	b1	C	r3
5,3	15,4	25,6	5,2	1	10



1

2

3



4

5

6

7

8

Materiale C 43 UNI 7847 / \* Materiale Ghisa G 22

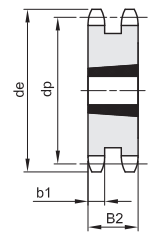
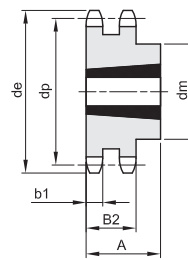
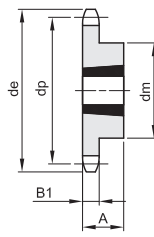
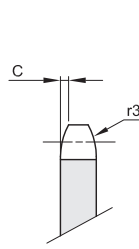
Z	de	dp	semplici				doppi				tripli						
			dm	A	Bussola	Tipo	Kg.	dm	A	Bussola	Tipo	Kg.	dm	A	Bussola	Tipo	Kg.
17	55,5	51,83	45	22	1008	1	0,11	41	22	1008	2	0,11	25,6	1008	5	0,15	
18	58,6	54,85	45	22	1008	1	0,14	43	22	1008	2	0,15					
19	61,6	57,86	45	22	1008	1	0,15	46	22	1008	2	0,18	25,6	1008	5	0,24	
20	64,6	60,89	46	22	1008	1	0,16	48	22	1008	2	0,22					
21	67,6	63,90	46	22	1008	1	0,18	49	22	1008	2	0,16	25,6	1008	5	0,34	
22	70,6	66,93	55	22	1108	1	0,25	52	22	1108	2	0,28					
23	73,7	69,95	63	25	1210	1	0,27	59	25	1210	2	0,27	25,6	1210	5	0,30	
24	76,7	72,97	63	25	1210	1	0,30	61	25	1210	2	0,32					
25	79,7	75,99	63	25	1210	1	0,32	64	25	1210	2	0,37	25,6	1210	5	0,41	
26	82,7	79,02	63	25	1210	1	0,33	65	25	1210	2	0,44					
27	85,7	82,04	63	25	1210	1	0,34	70	25	1210	2	0,50	25,6	1210	5	0,55	
28	88,8	85,07	63	25	1210	1	0,37	70	25	1210	2	0,57					
30	94,8	91,12	63	25	1210	1	0,39	75	25	1210	2	0,68	79	38	1615	4	0,88
38	119,0	115,34	70	25	1210	1	0,65	80	25	1610	2	1,03	90	38	1615	4	1,75
45	141,1	136,54	70	25	1210	1	1,01										
57*	177,5	172,91	83	25	1210	6	1,34	92	25	1610	7	1,16					
76*	235,1	230,49	83	25	1210	6	1,84	92	25	1610	7	2,19					



**PIGNONI PER BUSSOLA CONICA - DIN 8187 - ISO 606**  
**SPROCKETS FOR TAPER BUSHES - DIN 8187 - ISO 606**

**1/2" x 5/16"**  
**12,7 x 7,75 mm**  
**Rullo 8,51 mm**  
**08B - 1 - 2 - 3**

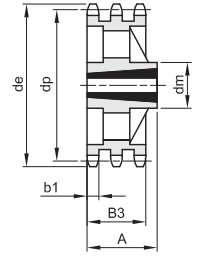
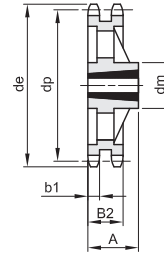
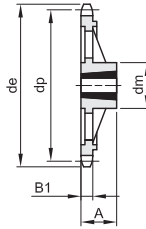
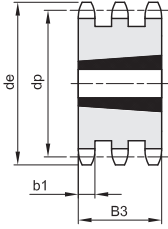
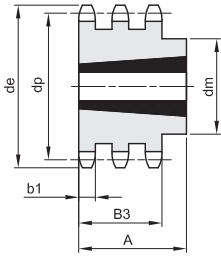
B1	B2	B3	b1	C	r3
7,2	21	34,9	7	1,3	13



1

2

3



4

5

6

7

8

Materiale C 43 UNI 7847 / \* Materiale Ghisa G 22

Z	de	dp	semplici				doppi				tripli						
			dm	A	Bussola	Tipo	Kg.	dm	A	Bussola	Tipo	Kg.	dm	A	Bussola	Tipo	Kg.
15	66,5	61,80	45	22	1008	1	0,16	46	22	1008	2	0,22		34,9	1008	5	0,36
16	69,9	65,10	50	22	1108	1	0,20	50	22	1108	2	0,22					
17	74,5	69,11	60	25	1210	1	0,22	56	25	1210	2	0,23		34,9	1210	5	0,35
18	78,0	73,14	60	25	1210	1	0,27	60	25	1210	2	0,30					
19	82,5	77,15	63	25	1210	1	0,33	62	25	1210	2	0,38	62	38	1215	4	0,61
20	86,0	81,19	67	25	1610	1	0,27	66	25	1610	2	0,45					
21	90,6	85,21	71	25	1610	1	0,36	70	25	1610	2	0,50	70	38	1615	4	0,65
22	94,1	89,24	71	25	1610	1	0,36	76	25	1610	2	0,55					
23	98,7	93,26	76	25	1610	1	0,50	79	25	1610	2	0,62	70	38	1615	4	0,93
24	102,1	97,29	76	25	1610	1	0,53	84	32	2012	2	0,68					
25	106,7	101,32	76	25	1610	1	0,56	87	32	2012	2	0,72		34,9	2012	5	0,85
26	110,2	105,36	76	25	1610	1	0,60	87	32	2012	2	0,82					
27	114,8	109,39	76	25	1610	1	0,63	87	32	2012	2	0,92		34,9	2012	5	1,18
28	118,3	113,42	90	32	2012	1	0,77	87	32	2012	2	1,10					
30	126,9	121,49	90	32	2012	1	0,91	87	32	2012	2	1,24		34,9	2012	5	1,73
38	159,2	153,79	90	32	2012	1	1,25	100	32	2012	2	2,50		34,9	2012	5	3,53
45	188,6	182,07	111	32	2012	1	1,68										
57*	237,1	230,54	111	32	2012	6	2,78	111	32	2012	7	3,64					
76*	313,9	307,33	111	32	2012	6	3,81	111	32	2012	7	5,09					

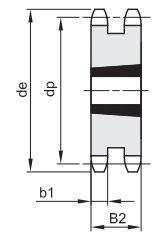
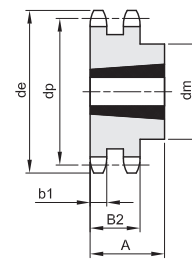
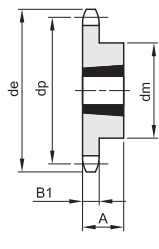
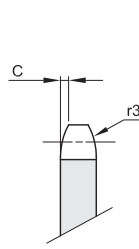


# PIGNONI PER BUSSOLA CONICA - DIN 8187 - ISO 606

## SPROCKETS FOR TAPER BUSHES - DIN 8187 - ISO 606

**5/8" x 3/8"**  
**15,875 x 9,65 mm**  
**Rullo 10,16 mm**  
**10B - 1 - 2 - 3**

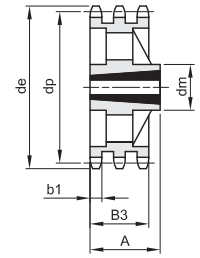
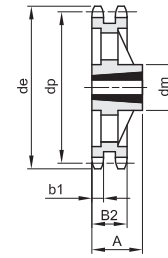
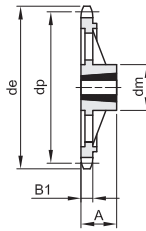
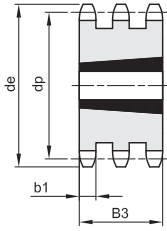
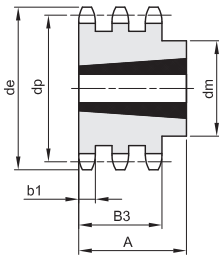
B1	B2	B3	b1	C	r3
9,1	25,5	42,1	9	1,6	16



1

2

3



4

5

6

7

8

Materiale C 43 UNI 7847 / \* Materiale Ghisa G 22

Z	de	dp	semplici				doppi				tripli							
			dm	A	Bussola	Tipo	Kg.	dm	A	Bussola	Tipo	Kg.	dm	A	Bussola	Tipo	Kg.	
13	73,2	66,33	47	22	1008	1	0,23											
14	78,2	71,34	52	22	1108	1	0,27											
15	83,2	76,35	60	25	1210	1	0,30	25,5	1210	3	0,38	42,1	1215	5	0,63			
16	88,3	81,37	63	25	1210	1	0,38	25,5	1610	3	0,42							
17	93,3	86,39	71	25	1610	1	0,38	25,5	1610	3	0,47	42,1	1215	5	1,01			
18	98,3	91,42	71	25	1610	1	0,43	25,5	1610	3	0,60							
19	103,3	96,44	75	25	1610	1	0,54	25,5	1610	3	0,72	42,1	1615	5	1,19			
20	108,4	101,49	76	25	1610	1	0,61	25,5	1610	3	0,87							
21	113,4	106,51	76	25	1610	1	0,65	25,5	1610	3	1,01	42,1	1615	5	1,66			
22	118,4	111,55	76	25	1610	1	0,72	25,5	1610	3	1,18							
23	123,5	116,58	76	25	1610	1	0,77	25,5	1610	3	1,35	42,1	2012	5	1,78			
24	128,5	121,62	90	32	2012	1	0,98	90	32	2012	2	1,45						
25	133,6	126,66	90	32	2012	1	1,05	90	32	2012	2	1,55	105	44	2517	4	1,81	
26	138,6	131,70	90	32	2012	1	1,11	90	32	2012	2	1,75						
27	143,6	136,74	90	32	2012	1	1,17	90	32	2012	2	1,98	110	44	2517	4	2,45	
28	148,7	141,78	90	32	2012	1	1,29	90	32	2012	2	2,30						
30	158,8	151,87	90	32	2012	1	1,40	90	32	2012	2	2,63	120	44	2517	4	3,54	
38	199,1	192,23	100	32	2012	1	2,43											
45	236,0	227,58	111	32	2012	1	3,55											
57*	296,6	288,18	111	32	2012	6	4,28											
76*	392,5	384,16	111	32	2012	6	5,95											



# PIGNONI PER BUSSOLA CONICA - DIN 8187 - ISO 606

## SPROCKETS FOR TAPER BUSHES - DIN 8187 - ISO 606

**3/4" x 7/16"**

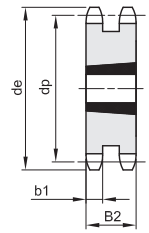
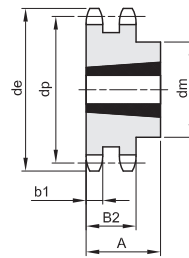
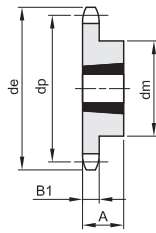
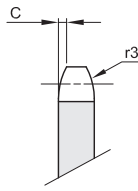
**19,05 x 11,68 mm**

**Rullo 12,07 mm**

**12B - 1 - 2 - 3**

B1	B2	B3	b1	C	r3
----	----	----	----	---	----

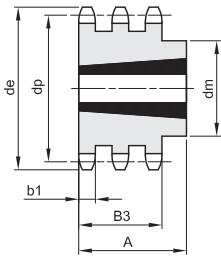
11,1	30,3	49,8	10,8	2	19
------	------	------	------	---	----



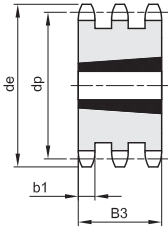
1

2

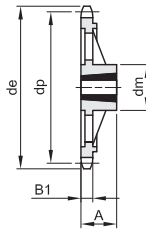
3



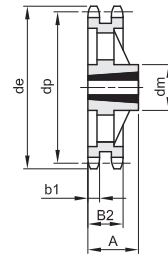
4



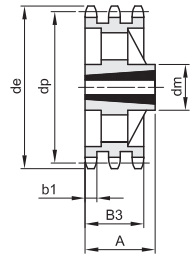
5



6



7



8

Materiale C 43 UNI 7847 / \* Materiale Ghisa G 22

Z	de	dp	semplici				doppi				tripli						
			dm	A	Bussola	Tipo	Kg.	dm	A	Bussola	Tipo	Kg.	dm	A	Bussola	Tipo	Kg.
13	87,8	79,60	60	25	1210	1	0,35										
14	93,8	85,61	67	25	1610	1	0,40										
15	99,8	91,62	70	25	1610	1	0,44		30,3	1610	3	0,68		49,8	1615	5	1,11
16	105,8	97,65	71	25	1610	1	0,53		30,3	1610	3	0,89		49,8	1615	5	1,75
17	111,9	103,67	76	25	1610	1	0,66		30,3	1610	3	1,14		49,8	1615	5	1,75
18	117,9	109,71	90	32	2012	1	0,86	90	32	2012	2	1,18					
19	123,9	115,73	90	32	2012	1	0,94	90	32	2012	2	1,24		49,8	2012	5	2,02
20	130,0	121,78	90	32	2012	1	1,04	108	44	2517	2	1,40					
21	136,0	127,81	102	44	2517	1	1,24	108	44	2517	2	1,68		49,8	2517	5	2,09
22	142,0	133,86	108	44	2517	1	1,60	108	44	2517	2	1,99					
23	148,1	139,90	108	44	2517	1	1,70	108	44	2517	2	2,24		49,8	2517	5	3,00
24	154,1	145,94	108	44	2517	1	1,81	108	44	2517	2	2,54					
25	160,2	151,99	108	44	2517	1	1,93	108	44	2517	2	2,87		49,8	2517	5	3,98
26	166,2	158,04	108	44	2517	1	2,04	108	44	2517	2	3,17					
27	172,3	164,09	108	44	2517	1	2,14	108	44	2517	2	3,55	140	51	3020	4	3,90
28	178,3	170,13	108	44	2517	1	2,37	108	44	2517	2	4,10					
30	190,4	182,24	108	44	2517	1	2,60	108	44	2517	2	4,62	140	51	3020	4	5,64
38	238,9	230,69	108	44	2517	1	3,93	140	51	3020	2	8,11	140	51	3020	4	11,58
45	283,2	273,10	124	44	2517	1	5,52										
57*	355,9	345,81	124	44	2517	6	6,48	160	51	3020	7	10,28	160	51	3020	8	13,23
76*	471,1	460,99	124	44	2517	6	9,71	160	51	3020	7	15,24					



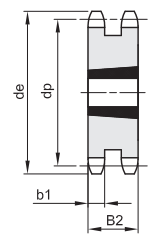
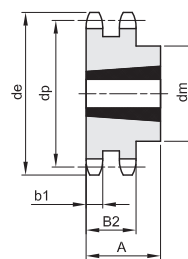
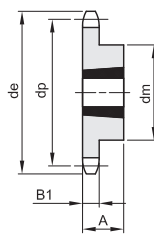
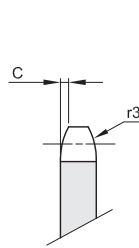
# PIGNONI PER BUSSOLA CONICA - DIN 8187 - ISO 606

## SPROCKETS FOR TAPER BUSHES - DIN 8187 - ISO 606

**1" x 17,02 mm**

**25,4 x 17,02 mm**  
**Rullo 15,88 mm**  
**16B - 1 - 2 - 3**

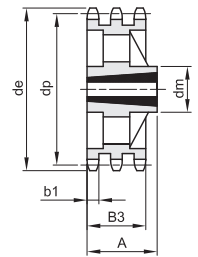
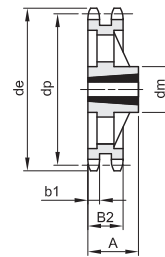
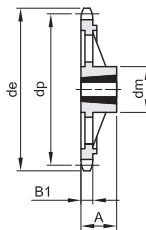
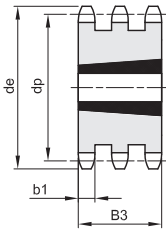
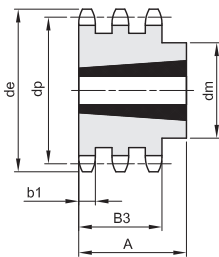
B1	B2	B3	b1	C	r3
16,2	47,7	79,6	15,8	2,5	26



1

2

3



4

5

6

7

8

Materiale C 43 UNI 7847 / \* Materiale Ghisa G 22

Z	de	dp	semplici				doppi				tripli							
			dm	A	Bussola	Tipo	Kg.	dm	A	Bussola	Tipo	Kg.	dm	A	Bussola	Tipo	Kg.	
13	117,7	106,13	73	38	1615	1	0,98											
14	125,7	114,15	75	38	1615	1	1,14											
15	133,7	122,16	76	38	1615	1	1,30		47,7	2012	3	2,11						
16	141,8	130,20	90	32	2012	1	1,40		47,7	2517	3	2,25						
17	149,8	138,23	90	32	2012	1	1,59		47,7	2517	3	2,53	79,6	2517	5	4,29		
18	157,8	146,28	108	44	2517	1	2,10		47,7	2517	3	3,10						
19	165,9	154,31	108	44	2517	1	2,29		47,7	2517	3	3,80	79,6	3030	5	4,36		
20	173,9	162,38	110	44	2517	1	2,60		47,7	2517	3	4,10						
21	182,0	170,42	110	44	2517	1	2,81	140	51	3020	2	4,15	79,6	3030	5	6,69		
22	190,1	178,48	110	44	2517	1	3,10	140	51	3020	2	4,90						
23	198,1	186,53	110	44	2517	1	3,38	140	51	3020	2	5,69	159	89	3535	4	7,80	
24	206,2	194,59	110	44	2517	1	3,70	140	51	3020	2	6,00						
25	214,2	202,66	110	44	2517	1	3,97	140	51	3020	2	6,38	175	89	3535	4	10,93	
26	222,3	210,72	110	44	2517	1	4,26	140	51	3020	2	7,80						
27	230,4	218,79	110	44	2517	1	4,55	140	51	3020	2	9,27	175	89	3535	4	14,06	
28	238,4	226,85	110	44	2517	1	5,26	140	51	3020	2	11,40						
30	254,6	242,99	120	44	2517	1	5,97	140	76	3030	2	13,50	175	89	3535	4	19,10	
38	319,2	307,59	160	51	3020	1	8,73	*160	76	3030	7	14,94	*178	89	3535	8	21,65	
45	377,9	364,12	160	51	3020	1	12,49											
57*	474,9	461,07	160	51	3020	6	13,87	178	89	3535	7	25,62	216	102	4040	8	40,50	
76*	628,4	614,65	160	51	3020	6	22,63											

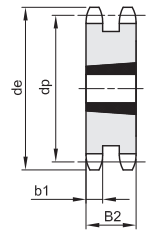
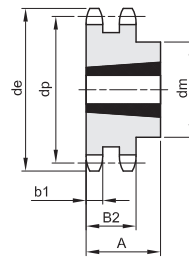
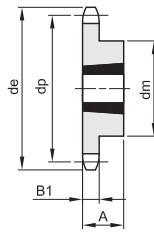
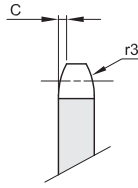


**PIGNONI PER BUSSOLA CONICA - DIN 8187 - ISO 606**  
**SPROCKETS FOR TAPER BUSHES - DIN 8187 - ISO 606**

**1"1/4 x 3/4"**

**31,75 x 19,56 mm**  
**Rullo 19,05 mm**  
**20B - 1**

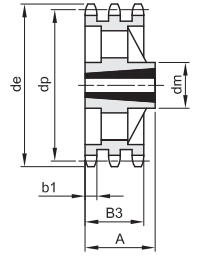
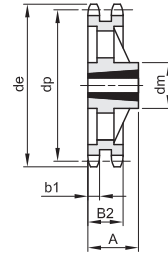
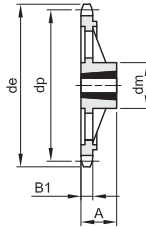
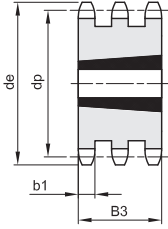
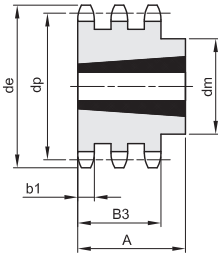
B1	B2	B3	b1	C	r3
18,5				3,5	32



1

2

3



4

5

6

7

8

Materiale C 43 UNI 7847 / \* Materiale Ghisa G 22

Z	de	dp	semplici				doppi				tripli							
			dm	A	Bussola	Tipo	Kg.	dm	A	Bussola	Tipo	Kg.	dm	A	Bussola	Tipo	Kg.	
15	167,7	152,72	110	44	2517	1	3,39											
17	187,7	172,78	110	44	2517	1	5,07											
19	207,9	192,91	110	44	2517	1	6,75											
21	228,0	213,04	120	44	2517	1	7,70											
23	248,2	233,17	120	44	2517	1	8,78											
25	268,4	253,33	120	44	2517	1	9,50											
30	318,7	303,65	160	51	3020	1	11,90											
38*	399,4	384,49	160	51	3020	6	15,80											